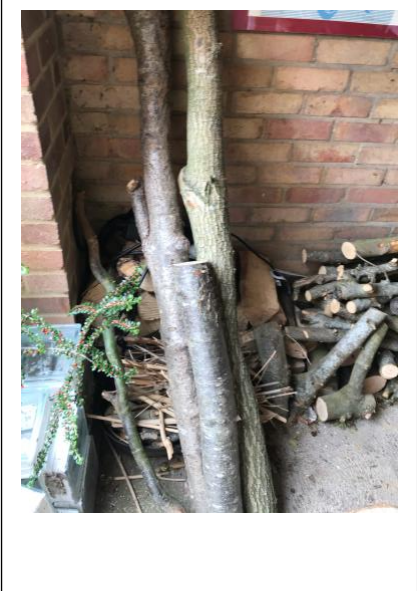


Long pieces of Ash which would form the "Heelstone" At the end of the line of figures.



My intention is to have the figures form a slightly arching line toward a final "heelstone" or taller piece which will be formed from longer lengths of Ash joined together and fused into a kind of column within which a viewing hole will be carved.

Hopefully this will provide a frame for the descending sun, depending on position of course.

The figures would be set into the ground using steel and concrete fixings to make them as teenager proof as possible and then set in a bed of French clay to match the existing paths.

