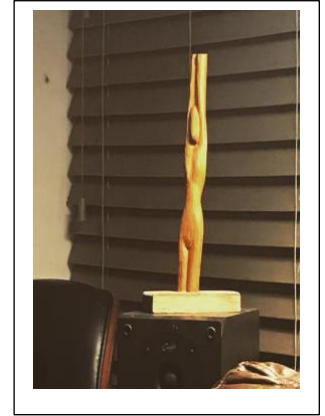
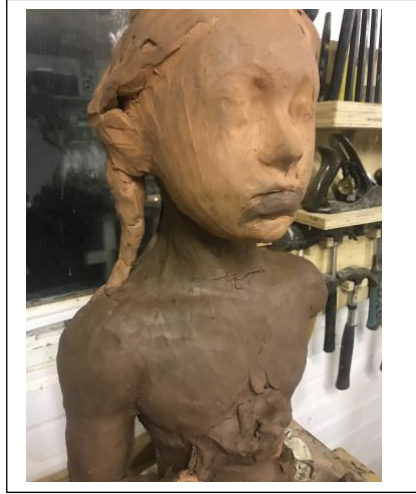
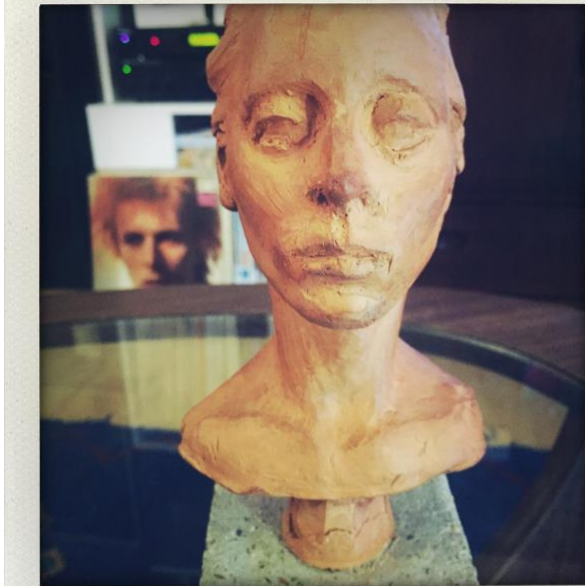


**BREWERY FIELD  
SCULPTURE  
PROPOSAL  
BY  
JASON MERRELLS**



SOME  
PREVIOUS  
WORK.



# A small henge for Duxford

My proposal is to make a small, interactive piece of sculpture for Brewery Field. This will be made up of wooden figures carved from Ash and forming a line of "brewers".

The history of Brewery Field, although not entirely clear there must, presumably, have been some history of brewing attached to the place, possibly cidermaking.

I want to make something that is timeless, yet also suggestive of this longer, deeper history.

Thanks to the development of Brewery field into a green space, we are again in the position of having native Cambridgeshire apples growing on the field and I thought some connection to this history might be good.

I was also interested in the pre Roman native tribes that may have dwelt here, both the Catuvellauni and the Iceni.

The Icknield way, passes further to the south, but this area of land, thanks to the flatness of the geography and the proximity of the airfield, make for such a stunning skyscape that I wanted to create a piece that would perhaps accentuate that view or celebrate it in some way.

The piece I am working on would have a series of low, carved forms that would be fixed into the ground, smoothed and oiled, so even though they are suggestive of figures (the brewers) they are touchable, climbable and sit-on-able. I want them to be part of the space and not a precious piece protected by a barrier.



# The Brewers



These are the pieces of Ash I have been drying and storing in order to make the sculptures. They would be roughly shaped with a chainsaw and then carved with a grinding tool, chisels, before being sanded smooth and oiled.

