

Harriet
&
Tilly

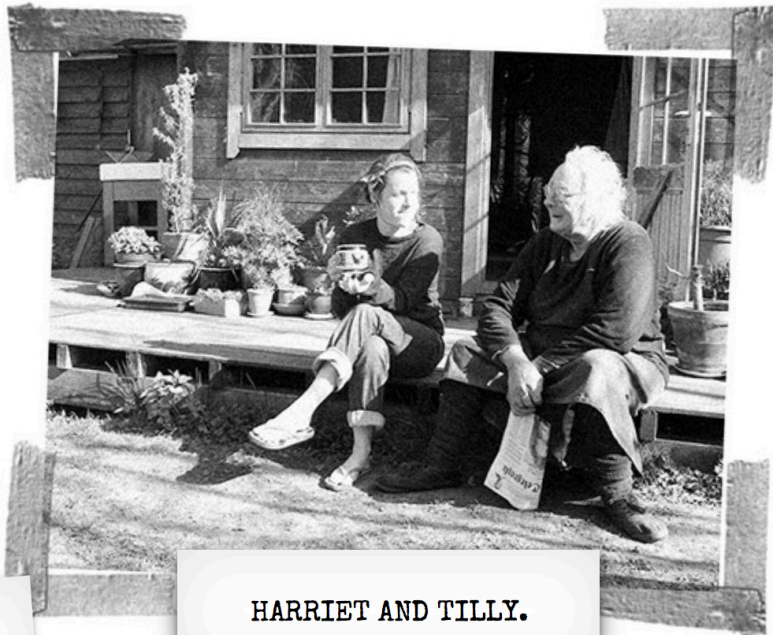


Cabinet Makers & Wood Turners

Bench design proposals for Duxford Parish Council

Presented by Tilly Mercer

About us...



HARRIET AND TILLY.

We mill our own timber and then all our work is made using hand tools and traditional methods.

We do make use of some sturdy belt driven machines for some sawing and planing work.

Harriet is a master cabinet maker and has been working with wood all her life.

I have been apprentice to Harriet for the last nine years and she has taught me the art of cabinet making. I also turn wood using a foot treadled pole lathe.

We work on a number of commissions each year. Most are individual pieces, others are specific requests for one of our stock items. Some are by way of requests from community and "arts funded" projects.

Because everything is hand made and depending on the scale of the work, time scale for each commission is variable.

Our designs...

We have visited the three sites.

At the millennium garden we noted the proximity to the 'Plough' and the view overlooking agricultural fields. At the green we noted the magnificent lime trees. At the last site near the village sign we noted the immediate view across the road and fields to the Duxford Aircraft Museum. Some or all of these elements have influenced our design proposals.

We would like to use materials and timber from the locality to make the benches site specific. If any metalwork is required we would like to use a local metalworker or blacksmith in the production.

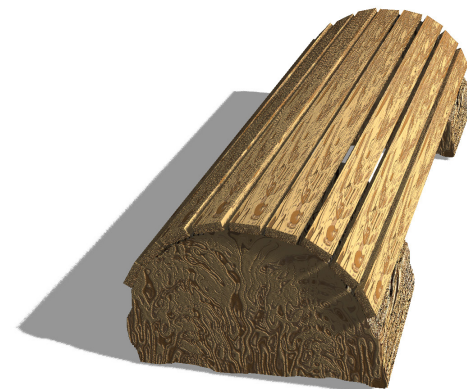
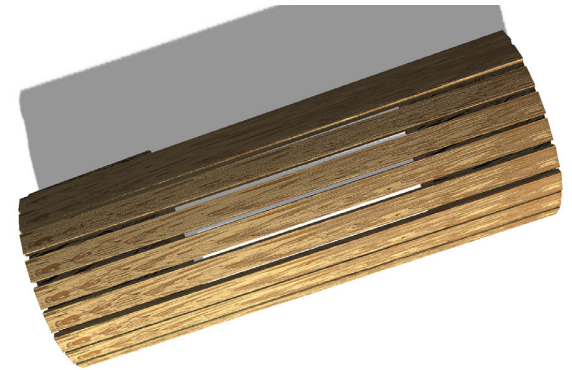
The designs that follow can be considered as individual items or three benches could be made as a series from one design.

We've included some more contemporary elements into the designs where applicable as an option.

We feel that the simple combination of "honest materials" is the key to making these benches striking, practical and durable.

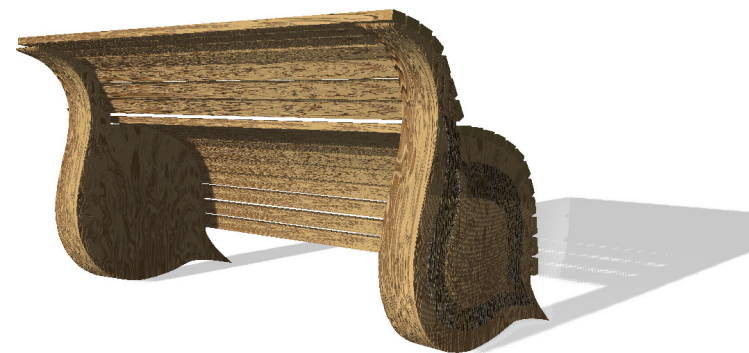
"hanger" the strip log bench.

Made from green oak logs combined
with green oak slatted seat.



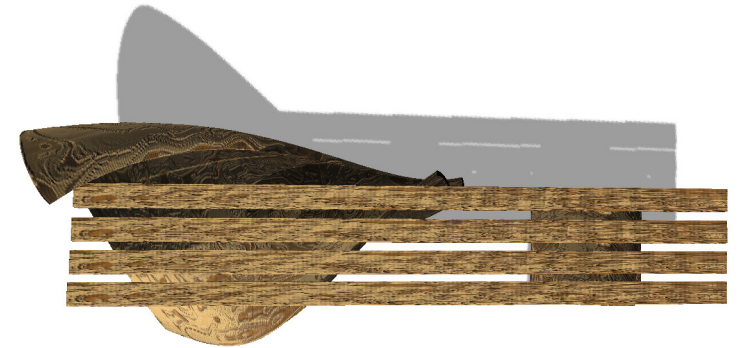
"lime leaf"
the bench with relief carved ends.

Solid carved green oak sides with
leaf detailing, green oak slatted seat.



"wood plough" the organic shaped bench.

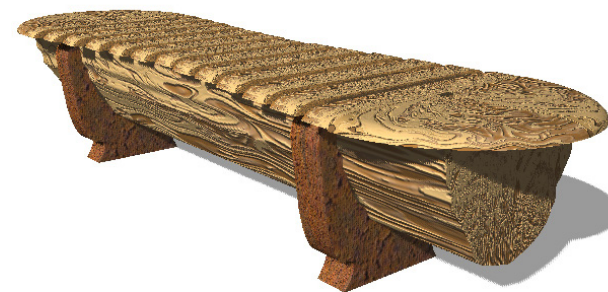
Made from green oak. The final shape will be simplified
with rounded edges.



"furrow"

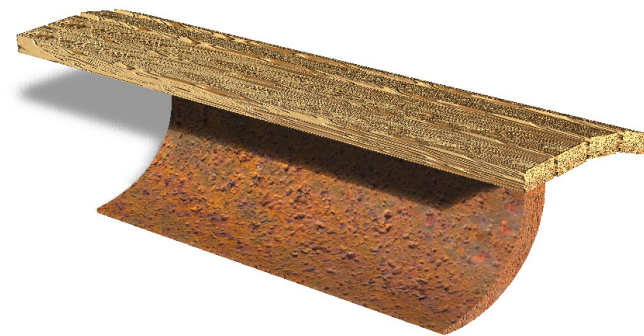
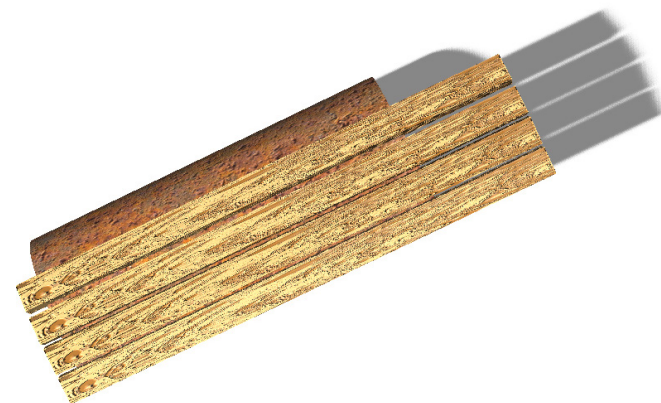
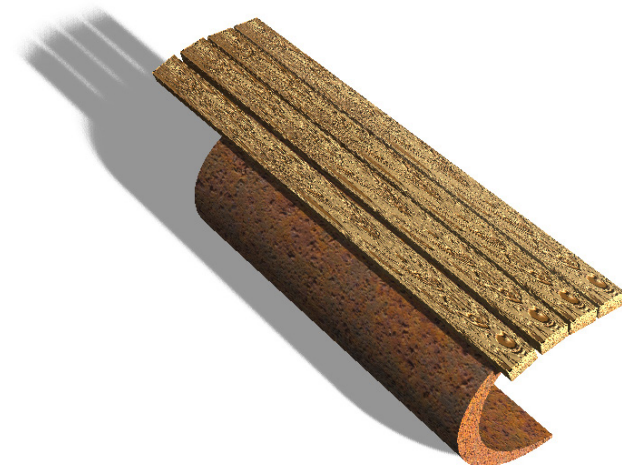
the curved solid log bench.

Made from aged steel metalwork (Or Yew timber) with
a lacquered finish and cedar or green oak timber
curved ends and slatted seat.



"LEADING EDGE" THE WING BENCH.

Made from aged steel metalwork with a lacquered finish and cedar slatted seat. Alternatively the base could be made from an Aluminium alloy as used in aircraft with green oak.



"the plough" the organic shaped bench.

Made from aged steel metalwork with a lacquered finish and cedar slatted seat. Alternatively the base could be made from and Aluminium alloy as used in aircraft with green oak. The final shape will be simplified.

